

IRREGULAR FEATURE

A Prototype For Everything – Impossible Crossing

It has been a loooong time since I wrote any of these articles but then that is fitting for the overall title as I wrote in my first one of these back in August 1998 *“I thought for quite some time about the title before finally deciding on “Irregular Feature”, feeling that this would best describe the contents and my style. Given the demands on my time, that is what it could be, sometimes missing one or two editions then popping up again just when you have forgotten about it, but I will try to keep it regular. I also like the fact that when you take the two initial letters you end up with the word “if” and how many of us like to use that to explain why we can’t do something? “If only...!”* For the new members or those that want to reread my earlier scribes you could dig through the old newsletters in the library, or most are available in my gallery here <http://noarail.com/members/index.php/Tony/IrregularFeature>

How many times have you heard the criticism about something on a layout “That is not real”? Well on a holiday in New Zealand I came across something that could be added to any layout and would always get the detail police pulling out their rulebook only to be shot down in mid sentence by showing them the photographic evidence presented here.

Driving around doing some sightseeing in Dunedin I stopped at a set of traffic lights, in doing so I noticed that there was also a railway crossing at the same place, naturally I glanced along the track for a bit of rail fanning. I could see a diesel and a few wagons sitting in the Kiwi Rail Network Depot on Srathallan Street.



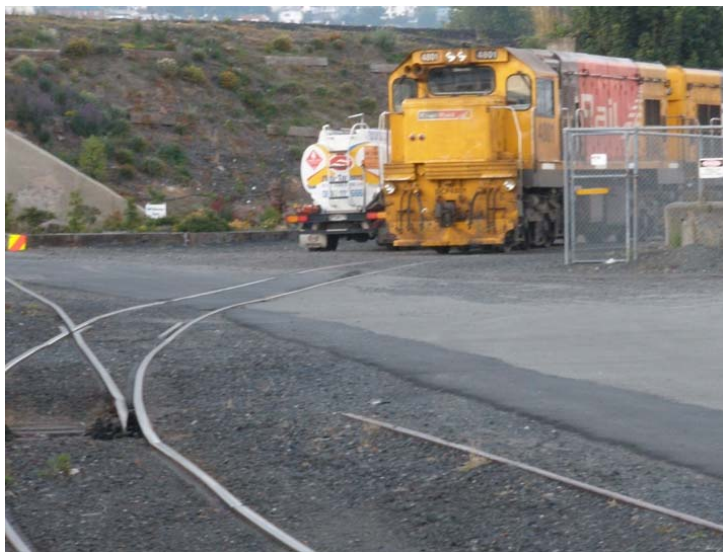
“Hmm, no steam so not much interest here, what is on the other side?” I looked left and there was a wall! On closer inspection there was sign on it which I thought appropriate as using the crossing would end in a rather sudden stop.

The wall and sign, it turns out, belong to a fast-food establishment called “Hell Pizza” where apparently they sell some rather devilish food.

The lights went green so we moved on around the corner and sure enough there was evidence that the tracks used to continue quite some way to various warehouses etc. along the way. I stopped,

much to the dismay of SWMBO, “More %&# \$ train photos” and went back to get the photos above of this disused but funny crossing. Upon doing so I was pleasantly surprised and glad that I had, as it turns out that the crossing is NOT just old, but is currently in use.

Right side of road looking into the depot you can see the loco in the distance and the rails finishing just before the nearside kerb.



Above: notice that the points are set for the crossing; yes they are operational as most of the yard is on the other track.



View to the left side of the road showing the wall and the tracks leading to it.
(Could it be Platform 9³/₄?)



Below: The flange grooves that show this is a used piece of track.



This is actually now just a headshunt for the depot, the "crossing" is located on Strathallan St. in Dunedin NZ Unfortunately Google Earth does not show it very well but it is located here 45°53'22.64"S 170°30'6.58"E

The original photos and a few more are in my gallery on our website

<http://noarail.com/members/index.php/Tony/A-Prototype-For-Everything/Impossible-Crossing>

Catch you down the track....Tony Mikolaj.